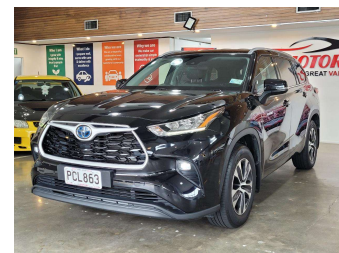
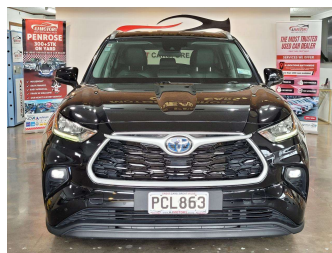


# 2022 Toyota Highlander LIMITED 2.5PH/4WD/HD



**Purchase Price** **\$56,980**

Includes GST  
Excludes on-road costs of \$695

Finance may be available on this vehicle. Ask one of our friendly staff for more information.



Gain peace of mind with Mechanical Breakdown Insurance. **Ask us how.**



**Top features**

- » ABS
- » Air Conditioning
- » Alloy Wheels
- » Bluetooth
- » Central Locking
- » Child seat anchor poin...
- » Cruise control
- » Dual Climate Control
- » Eco Mode
- » Electric Mirrors (Retr...
- » Electronic Parking Bra...
- » EV mode
- » Fog Lights
- » Headlights - LED with...
- » Heated Seats
- » Lane Departure Warning
- » LED daytime running li...
- » Multi-function steerin...

Body Style  
**5 door, RV/SUV**

Odometer  
**90,000 km**

Engine  
**2487 cc, Hybrid**

Fuel Type  
**Petrol**

Transmission  
**Automatic, 4WD**

Wheels  
**18", Factory Alloys**

VIN  
**5TDLB3CH70S075916**

Interior  
**Black, Plastic**

Safety



Based on 2021 ANCAP rating for 21+ models

Reg No.  
**PCL863**

Ext Colour  
**Black**

History  
**Ex-Overseas**

Seats  
**7 seats, Leather**

CO2 Emissions  
**★★★★☆**  
**142 grams/km**

Energy Economy  
**★★★★☆☆**

**Annual fuel cost of \$2,430**  
**6.2L per 100km**

Cost per year is an estimate based on petrol price of \$2.80 per litre and an average distance of 14000 km. Emissions and Energy Economy figures standardised to 3P WLTP.

**Stock ID: 32571**



AJ Motors Wellington | Phone 0800 566 789 | Email kim@ajmotors.co.nz  
35 Annie Huggan Grove, Petone, Lower Hutt 5012, New Zealand  
www.ajmotors.co.nz