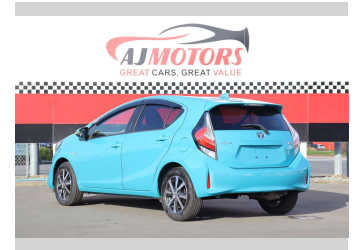
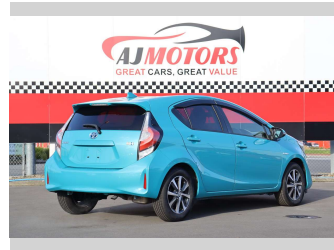
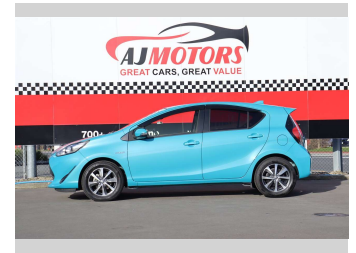


2017 Toyota Aqua S Push button



Purchase Price

\$14,980

Includes GST
Excludes on-road costs of \$695

Finance may be available on this vehicle. Ask one of our friendly staff for more information.

finance
NOW

Gain peace of mind with Mechanical Breakdown Insurance. **Ask us how.**

autosure
INSURANCE

Top features

- » ABS
- » Auto air-condition
- » Auto headlight
- » Central Locking
- » Eco Mode
- » EV mode
- » Forward Collision Mitigation
- » Lane Departure Warning
- » Push button start
- » Rear Wiper
- » Smart key system with...
- » Traction control

Body Style

4 door, Hatchback

Odometer

66,900 km

Engine

1500 cc, Hybrid

Fuel Type

Hybrid

Transmission

Automatic, 2WD

Wheels

15"

VIN

7AT0H65YX25633699

Interior

Black

Safety



Based on 2024 UCSR rating for 12-20 models

Reg No.

-

Ext Colour

Blue

History

Ex-Overseas

Seats

5 seats

CO2 Emissions

★★★★☆

90 grams/km

Energy Economy

★★★★☆☆

**Annual fuel cost of \$1,490
3.8L per 100km**

Cost per year is an estimate based on petrol price of \$2.80 per litre and an average distance of 14000 km. Emissions and Energy Economy figures standardised to 3P WLTP.

Stock ID: 28075



AJ Motors Christchurch City | Phone 0800 566 789 | Email
sockburn@ajmotors.co.nz
393 Ferry Road, Woolston, Christchurch 8023, New Zealand
www.ajmotors.co.nz