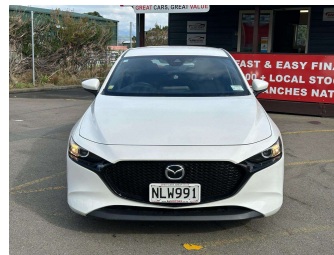



2021 Mazda 3 GSX 2.0P/6AT NZ NEW! Axela




Purchase Price **\$19,588**

Includes GST
Excludes on-road costs of \$695

Finance may be available on this vehicle. Ask one of our friendly staff for more information.



Gain peace of mind with Mechanical Breakdown Insurance. **Ask us how.**



Top features

- » Adaptive Cruise Control
- » All auto windows
- » Auto Hold
- » Bluetooth
- » Electronic Hand Brake
- » Hand-free car phone
- » i-Stop
- » NZ GPS
- » Parking Sensors
- » Sport mode

Body Style
5 door, Hatchback

Odometer
106,000 km

Engine
2000 cc, Internal Combustion

Fuel Type
Petrol


Transmission
Automatic, Front Wheel

Wheels
16", Factory Alloys

VIN
JM0BP2H7A01134580

Interior
Black, Leather and Plastic

Safety



Based on 2019 ANCAP rating for 19+ models

Reg No.
NLW991

Ext Colour
White

History
NZ New

Seats
5 seats, Fabric

CO2 Emissions
★★★★☆
162 grams/km

Energy Economy
★★★★☆☆
Annual fuel cost of \$2,700
6.9L per 100km

Cost per year is an estimate based on petrol price of \$2.80 per litre and an average distance of 14000 km. Emissions and Energy Economy figures standardised to 3P WLTP.

Stock ID: 27664



AJ Motors Wellington | Phone 0800 566 789 | Email kim@ajmotors.co.nz
35 Annie Huggan Grove, Petone, Lower Hutt 5012, New Zealand
www.ajmotors.co.nz