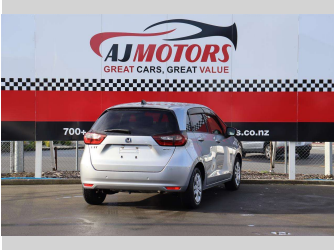


2020 Honda Fit 1.5L Hybrid



Purchase Price

\$17,980

Includes GST
Excludes on-road costs of \$695

Finance may be available on this vehicle. Ask one of our friendly staff for more information.



Gain peace of mind with Mechanical Breakdown Insurance. **Ask us how.**



Top features

- » ABS
- » Auto air-condition
- » Auto headlight
- » Auto Hold
- » Bluetooth
- » Central Locking
- » Cruise control
- » Eco Mode
- » Electric Mirrors (Retr...
- » Fog Lights
- » Lane Keeping
- » Parking Sensors
- » Push button start
- » Rear Wiper
- » Reversing Camera
- » Smart key system with...

Body Style

5 door, Hatchback

Odometer

66,300 km

Engine

1500 cc, Hybrid

Fuel Type

Petrol

Transmission

Automatic, Front Wheel

Wheels

15"

VIN

7AT08G2YX25006491

Interior

Black

Safety



Based on 2024 VSRR rating

Reg No.

-

Ext Colour

Silver

History

Ex-Overseas

Seats

5 seats

CO2 Emissions

★★★★☆

81 grams/km

Energy Economy

★★★★☆

**Annual fuel cost of \$1,370
3.5L per 100km**

Cost per year is an estimate based on petrol price of \$2.80 per litre and an average distance of 14000 km. Emissions and Energy Economy figures standardised to 3P WLTP.

Stock ID: 28049



AJ Motors Christchurch City | Phone 0800 566 789 | Email
sockburn@ajmotors.co.nz
393 Ferry Road, Woolston, Christchurch 8023, New Zealand
www.ajmotors.co.nz