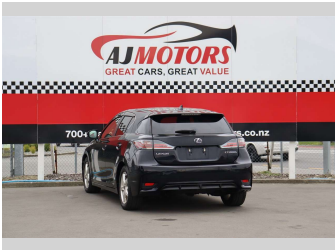
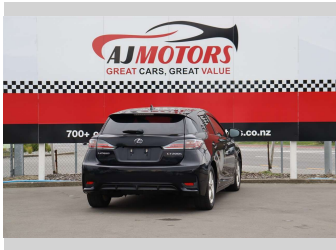
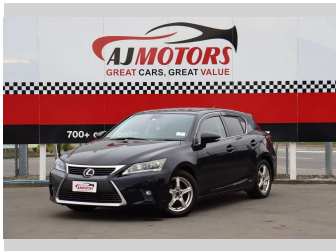


2014 Lexus CT200H 1.8L Petrol Hybrid



Purchase Price

Includes GST, Registration & Licensing

POA

Finance may be available on this vehicle. Ask one of our friendly staff for more information.

finance

NOW

Gain peace of mind with Mechanical Breakdown Insurance. Ask us how.

autosure

INSURANCE

Top features

» ABS

» Auto air-condition

» Auto headlight

» Central Locking

» Cruise control

» Eco Mode

» electric seats

» EV mode

» Fog Lights

» Heated Seats

» Paddle Gear Shift

» Push button start

» Rear Wiper

» Reversing Camera

» Smart key system with...

» Sport mode

» Traction control

Body Style

4 door, Hatchback

Odometer

92,900 km

Engine

1790 cc, Hybrid

Fuel Type

Electricity

Transmission

Automatic, 2WD

Wheels

16"

VIN

7AT0B010X25185217

Interior

Black

Safety

4 star

safety rating

Based on 2024 VSRR rating

Reg No.

-

Ext Colour

Black

History

Ex-Overseas

Seats

5 seats

CO2 Emissions

★★★★☆

109 grams/km

Energy Economy

★★★★☆☆

Annual fuel cost of \$1,840

4.7L per 100km

Cost per year is an estimate based on petrol price of \$2.80 per litre and an average distance of 14000 km. Emissions and Energy Economy figures standardised to 3P WLTP.

Stock ID: 28534