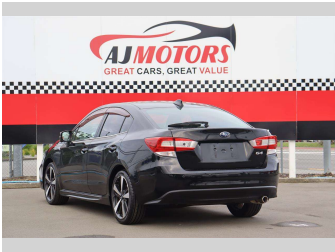
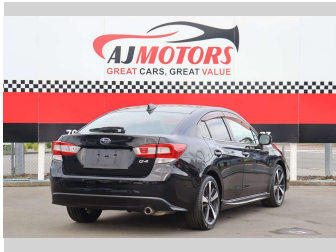


2017 Subaru Impreza G4 2.0I EYESIGHT



Purchase Price

\$14,487

Includes GST

Excludes on-road costs of \$695

Finance may be available on this vehicle. Ask one of our friendly staff for more information.

finance

NOW

Gain peace of mind with Mechanical Breakdown Insurance. Ask us how.

autosure

INSURANCE

Top features

» ABS

» Adaptive Cruise Contro...

» Auto air-condition

» Auto headlight

» Auto Start Stop

» Central Locking

» Forward Collision Mit...

» Lane Departure Warning

» Parking Sensors

» Reversing Camera

» Smart key system with...

» Traction control

Body Style

4 door, Sedan

Odometer

80,000 km

Engine

2000 cc, Internal Combustion

Fuel Type

Petrol

Transmission

Automatic, 2WD

Wheels

18", Factory Alloys

VIN

7AT0GF09X25006062

Interior

Black

Safety

5 star

safety rating

Based on 2024 UCSR rating for 16-22 models

Reg No.

-

Ext Colour

Black

History

Ex-Overseas

Seats

5 seats

CO2 Emissions

★★★★★☆☆

165 grams/km

Energy Economy

★★★☆☆☆☆

Annual fuel cost of \$2,780

7.1L per 100km

Cost per year is an estimate based on petrol price of \$2.80 per litre and an average distance of 14000 km. Emissions and Energy Economy figures standardised to 3P WLTP.

Stock ID: 26363