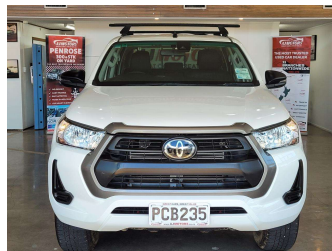


2022 Toyota Hilux SR TD DC 2.8D/6AT



Purchase Price

\$38,980

Includes GST
Excludes on-road costs of \$695

Indicative repayments

\$216.11 per week*

Based on a 60 month term & no deposit.
Total repayments (260) = **\$56,189.6**

finance
NOW

Gain peace of mind with
Mechanical Breakdown
Insurance. **Ask us how.**



Top features

- » ABS
- » Air Conditioning
- » Auto headlight
- » Bluetooth
- » Canopy
- » Central Locking
- » Cruise control
- » Electric Mirrors (Retr...
- » Fog Lights
- » Lane Departure Warning
- » Multi-function steerin...
- » Power Tailgate
- » Pre crush safety
- » Push button start
- » Rear Wiper
- » Roof Rack
- » Steel Wheel
- » Storage - Centre conso...

Body Style

5 door, Ute

Odometer

85,640 km

Engine

2755 cc, Internal Combustion

Fuel Type

Diesel

Transmission

6-Speed Automatic, 2WD

Wheels

17", Steel Wheels

VIN

MR0JA3DD600349598

Interior

Black, Plastic

Safety



Based on 2019 ANCAP rating
for 19+ models

Reg No.

PCB235

Ext Colour

White

History

NZ New, 2 owners

Seats

5 seats, Fabric

CO2 Emissions

★★★★☆☆

227 grams/km

Energy Economy

★★★★☆☆

**Annual fuel cost of \$3,470
8.6L per 100km**

Cost per year is an estimate based
on diesel price of \$2.00 per litre and
an average distance of 14000 km.
Includes Road User Charges (RUC).
Emissions and Energy Economy
figures standardised to 3P WLTP.

Stock ID: 25260



AJ Motors Penrose | Phone 0800 566 789 | Email penrose@ajmotors.co.nz
695 Great South Road, Penrose, Auckland 1061, New Zealand
www.ajmotors.co.nz

* AJ Motors Penrose is not a lender nor a financial adviser. Any amounts displayed should not be seen as an offer of finance or taken as financial advice. The interest rate, fees and loan term used in this calculation may not actually represent those available from lenders. Actual interest rates, fees and loan terms will vary per lender and are typically based on an assessment of your credit risk and responsible lending criteria. Any repayment amounts displayed are indicative only and have been calculated using several other indicative inputs. The interest rate used in this calculation is an arbitrary 13.95%, however exact interest rates vary per lender. The term of the loan used in this calculation is 60 month. Exact terms available vary per lender although options typically include 6, 12, 18, 24, 36, 48 and 60 months. This calculation also includes two typical mandatory fees charged by lenders. These are an account admin fee of \$2.50 per month (other payment frequencies may be available) and a one-off establishment fee of \$510.00. Typically, this fee can be paid upfront or, as in this calculation, be capitalised over the contract term, ie. included in the loan amount. These fees can vary per lender and other non-mandatory fees and charges may also apply. The total amount of repayments has been calculated by multiplying 260 weekly repayments (based on a 60 month term) by the weekly repayment amount of \$216.11 which equals \$56,189.60. This calculator does not consider any of your own personal circumstances and we strongly suggest you seek budgeting advice prior to committing to any loan contract. Responsible lending criteria and lender terms and conditions will likely apply to any finalised loan contract. Proof of security and/or vehicle insurance may also be required before proceeding.

Generated 27 April 2025 23:43