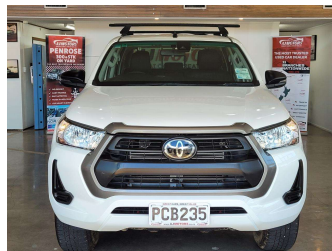


2022 Toyota Hilux SR TD DC 2.8D/6AT



Purchase Price

\$37,980

Includes GST
Excludes on-road costs of \$695

Finance may be available on this vehicle. Ask one of our friendly staff for more information.

**finance
NOW**

Gain peace of mind with Mechanical Breakdown Insurance. **Ask us how.**

autosure
INSURANCE

Top features

- » ABS
- » Air Conditioning
- » Auto headlight
- » Bluetooth
- » Canopy
- » Central Locking
- » Cruise control
- » Electric Mirrors (Retr...
- » Fog Lights
- » Lane Departure Warning
- » Multi-function steerin...
- » Power Tailgate
- » Pre crush safety
- » Push button start
- » Rear Wiper
- » Roof Rack
- » Steel Wheel
- » Storage - Centre conso...

Body Style

5 door, Ute

Odometer

85,640 km

Engine

2755 cc, Internal Combustion

Fuel Type

Diesel

Transmission

Automatic, 2WD

Wheels

17", Steel Wheels

VIN

MR0JA3DD600349598

Interior

Black, Plastic

Safety



Based on 2019 ANCAP rating for 19+ models

Reg No.

PCB235

Ext Colour

White

History

NZ New, 2 owners

Seats

5 seats, Fabric

CO2 Emissions

★★★★☆☆

227 grams/km

Energy Economy

★★★★☆☆

**Annual fuel cost of \$3,470
8.6L per 100km**

Cost per year is an estimate based on diesel price of \$2.00 per litre and an average distance of 14000 km. Includes Road User Charges (RUC). Emissions and Energy Economy figures standardised to 3P WLTP.

Stock ID: 25260



AJ Motors Wellington | Phone 0800 566 789 | Email kim@ajmotors.co.nz
35 Annie Huggan Grove, Petone, Lower Hutt 5012, New Zealand
www.ajmotors.co.nz