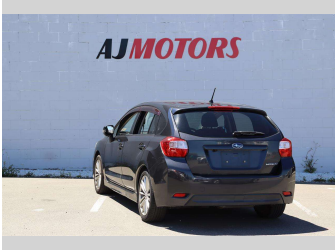


2014 Subaru Impreza 2.0L



Purchase Price

Includes GST
Excludes on-road costs of \$695

\$9,987

Finance may be available on this vehicle. Ask one of our friendly staff for more information.

Gain peace of mind with Mechanical Breakdown Insurance. **Ask us how.**

Top features

- » ABS
- » Central Locking
- » Fog Lights
- » Smart key system with front door touch sensors

Body Style

4 door, Hatchback

Odometer

110,500 km

Engine

2000 cc, Internal Combustion

Fuel Type

Petrol

Transmission

Automatic, 2WD

Wheels

17", Factory Alloys

VIN

7AT0GF09X24012080

Interior

Black

Safety

4 star safety rating

Based on 2024 UCSR rating for 12-16 models

Reg No.

-

Ext Colour

Grey

History

Ex-Overseas

Seats

5 seats

CO2 Emissions

★★★★☆
153 grams/km

Energy Economy

★★★★☆☆
Annual fuel cost of \$2,590
6.6L per 100km

Cost per year is an estimate based on petrol price of \$2.80 per litre and an average distance of 14000 km. Emissions and Energy Economy figures standardised to 3P WLTP.

Stock ID: 24623



AJ Motors Christchurch City | Phone 0800 566 789 | Email sockburn@ajmotors.co.nz
393 Ferry Road, Woolston, Christchurch 8023, New Zealand
www.ajmotors.co.nz