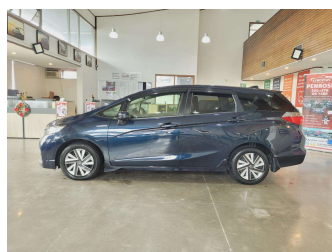


# 2016 Honda Shuttle HV X STYLE EDN



## Purchase Price

**\$12,980**

Includes GST  
Excludes on-road costs of \$695

Finance may be available on this vehicle. Ask one of our friendly staff for more information.

**finance  
NOW**

Gain peace of mind with Mechanical Breakdown Insurance. **Ask us how.**

**autosure**  
INSURANCE

## Top features

- » ABS
- » Air Conditioning
- » Bluetooth
- » Central Locking
- » Child seat anchor poin...
- » Cruise control
- » Eco Mode
- » Electric Mirrors (Retr...
- » Fog Lights
- » Multi-function steerin...
- » Power window
- » Pre crush safety
- » Push button start
- » Rear Wiper
- » Reversing Camera
- » Smart key system with...
- » Storage - Centre conso...
- » Traction control

## Body Style

**5 door, Station Wagon**

## Odometer

**112,000 km**

## Engine

**1500 cc, Hybrid**

## Fuel Type

**Electricity**

## Transmission

**Automatic, Front Wheel**

## Wheels

**15", Steel Wheels**

## VIN

**7AT08G1XX25028519**

## Interior

**Black, Plastic**

## Safety



Based on 2025 VSRR rating

## Reg No.

-

## Ext Colour

**NAVYBLUE**

## History

**Ex-Overseas**

## Seats

**5 seats, Fabric**

## CO2 Emissions

★★★★☆

**95 grams/km**

## Energy Economy

★★★★☆☆

**Annual fuel cost of \$1,570  
4L per 100km**

Cost per year is an estimate based on petrol price of \$2.80 per litre and an average distance of 14000 km. Emissions and Energy Economy figures standardised to 3P WLTP.

**Stock ID: 31053**



AJ Motors Wellington | Phone 0800 566 789 | Email kim@ajmotors.co.nz  
35 Annie Huggan Grove, Petone, Lower Hutt 5012, New Zealand  
www.ajmotors.co.nz