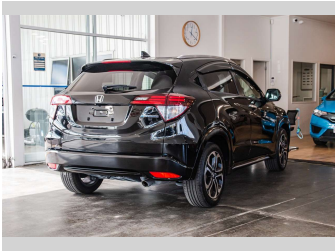


# 2017 Honda Vezel Hybrid Cruise Control



Purchase Price

\$22,980

Includes GST

Excludes on-road costs of \$695

Indicative repayments

\$130.37 per week\*

Based on a 60 month term & no deposit.

Total repayments (260) = \$33,895.08

finance

NOW

Gain peace of mind with Mechanical Breakdown Insurance. Ask us how.

autosure

INSURANCE

Top features

None Listed

Body Style	Reg No.
RV/SUV	-
Odometer	Ext Colour
84,600 km	Black
Engine	History
1500 cc, Hybrid	Ex-Overseas
Fuel Type	Seats
Hybrid	5 seats
Transmission	CO2 Emissions
Automatic	★★★★★☆☆
Wheels	121 grams/km
-	Energy Economy
VIN	★★★★☆☆☆☆
7AT08GDHX25263593	Annual fuel cost of \$2,040
Interior	5.2L per 100km
Black	Cost per year is an estimate based on petrol price of \$2.80 per litre and an average distance of 14000 km. Emissions and Energy Economy figures standardised to 3P WLTP.
Safety	Stock ID: 26372
<div><div><div></div><div>5 star safety rating</div></div></div>	
Based on 2024 VSRR rating	

AJ MOTORS

GREAT CARS. GREAT VALUE

AJ Motors Henderson | Phone 0800 566 789 | Email [hendersonenquiry@ajmotors.co.nz](mailto:hendersonenquiry@ajmotors.co.nz)

138 Central Park Drive, Henderson, Auckland, New Zealand

[www.ajmotors.co.nz](http://www.ajmotors.co.nz)

\* AJ Motors Henderson is not a lender nor a financial adviser. Any amounts displayed should not be seen as an offer of finance or taken as financial advice. The interest rate, fees and loan term used in this calculation may not actually represent those available from lenders. Actual interest rates, fees and loan terms will vary per lender and are typically based on an assessment of your credit risk and responsible lending criteria. Any repayment amounts displayed are indicative only and have been calculated using several other indicative inputs. The interest rate used in this calculation is an arbitrary 13.95%, however exact interest rates vary per lender. The term of the loan used in this calculation is 60 month. Exact terms available vary per lender although options typically include 6, 12, 18, 24, 36, 48 and 60 months. This calculation also includes two typical mandatory fees charged by lenders. These are an account admin fee of \$2.50 per month (other payment frequencies may be available) and a one-off establishment fee of \$523.00. Typically, this fee can be paid upfront or, as in this calculation, be capitalised over the contract term, ie. included in the loan amount. These fees can vary per lender and other non-mandatory fees and charges may also apply. The total amount of repayments has been calculated by multiplying 260 weekly repayments (based on a 60 month term) by the weekly repayment amount of \$130.37 which equals \$33,895.08. This calculator does not consider any of your own personal circumstances and we strongly suggest you seek budgeting advice prior to committing to any loan contract. Responsible lending criteria and lender terms and conditions will likely apply to any finalised loan contract. Proof of security and/or vehicle insurance may also be required before proceeding.