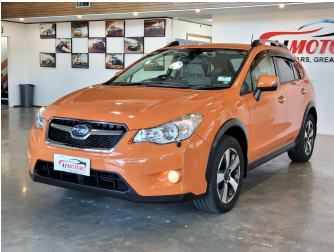
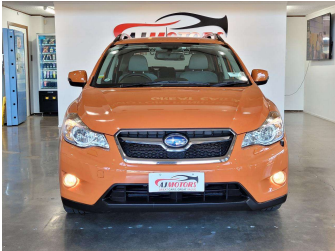


# 2014 Subaru XV Hybrid 2.0I-L EYESIGHT 4WD



Purchase Price

\$15,980

Includes GST

Excludes on-road costs of \$695

Finance may be available on this vehicle. Ask one of our friendly staff for more information.

finance

NOW

Gain peace of mind with Mechanical Breakdown Insurance. Ask us how.

autosure

INSURANCE

Top features

» ABS

» Air Conditioning

» Alloy Wheels

» Bluetooth

» Central Locking

» Child seat anchor poin...

» Cruise control

» Dual air-condition

» Eco Mode

» Electric Mirrors (Retr...

» Fog Lights

» Head Light Washer

» Lane Departure Warning

» Multi-function steerin...

» Paddle Gear Shift

» Power window

» Pre crush safety

» Push button start

Body Style

5 door, Hatchback

Odometer

67,406 km

Engine

1990 cc, Hybrid

Fuel Type

Hybrid

Transmission

Automatic, AWD

Wheels

17", Factory Alloys

VIN

7AT0GF1XX25011788

Interior

Black, Plastic

Safety

5 star

safety rating

Based on 2024 UCSR rating for 12-16 models

Reg No.

-

Ext Colour

Orange

History

Ex-Overseas

Seats

5 seats, Fabric

CO2 Emissions

★★★★☆

137 grams/km

Energy Economy

★★★★☆☆

Annual fuel cost of \$2,310

5.9L per 100km

Cost per year is an estimate based on petrol price of \$2.80 per litre and an average distance of 14000 km. Emissions and Energy Economy figures standardised to 3P WLTP.

Stock ID: 27249



AJ Motors Wellington | Phone 0800 566 789 | Email kim@ajmotors.co.nz  
35 Annie Huggan Grove, Petone, Lower Hutt 5012, New Zealand  
www.ajmotors.co.nz