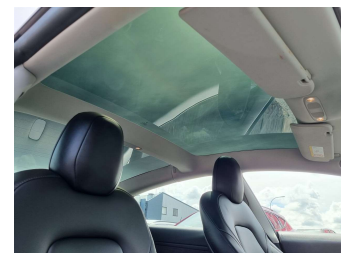


2021 Tesla Model 3 STANDARD RANGE PLUS (NZ)



Purchase Price

\$34,980

Includes GST
Excludes on-road costs of \$295

Indicative repayments

\$226.14 per week*

Based on a 48 month term & no deposit.
Total repayments (208) = **\$47,036.45**

finance
NOW

Gain peace of mind with
Mechanical Breakdown
Insurance. **Ask us how.**

autosure
INSURANCE

Top features

None Listed

Body Style

4 door, Sedan

Odometer

64,001 km

Engine

0 cc, Electric

Fuel Type

Electricity

Transmission

Automatic, Rear Wheel

Wheels

18", Factory Alloys

VIN

LRW3F7FJ9MC404808

Interior

Black

Safety



Based on 2019 ANCAP rating
for 19-23 models

Reg No.

RJS183

Ext Colour

White

History

NZ New, 1 owner

Seats

5 seats

CO2 Emissions

★★★★★☆☆

0 grams/km

Energy Economy

★★★★★☆☆

Annual fuel cost of \$1,770

Cost per year is an estimate based
on electricity price of \$0.27 per kWh
and an average distance of 14000
km. Includes Road User Charges
(RUC). Emissions and Energy
Economy figures standardised to 3P
WLTP.
Stock ID: 32497



AJ Motors Hamilton | Phone 0800 566 789 | Email
teamhamilton@ajmotors.co.nz
232 Kahikatea Drive, Frankton, Hamilton 3204, New Zealand
www.ajmotors.co.nz

* AJ Motors Hamilton is not a lender nor a financial adviser. Any amounts displayed should not be seen as an offer of finance or taken as financial advice. The interest rate, fees and loan term used in this calculation may not actually represent those available from lenders. Actual interest rates, fees and loan terms will vary per lender and are typically based on an assessment of your credit risk and responsible lending criteria. Any repayment amounts displayed are indicative only and have been calculated using several other indicative inputs. The interest rate used in this calculation is an arbitrary 13.95%, however exact interest rates vary per lender. The term of the loan used in this calculation is 48 months. Exact terms available vary per lender although options typically include 6, 12, 18, 24, 36, 48 and 60 months. This calculation also includes two typical mandatory fees charged by lenders. These are an account admin fee of \$3.00 per month (other payment frequencies may be available) and a one-off establishment fee of \$508.00. Typically, this fee can be paid upfront or, as in this calculation, be capitalised over the contract term, ie. included in the loan amount. These fees can vary per lender and other non-mandatory fees and charges may also apply. The total amount of repayments has been calculated by multiplying 208 weekly repayments (based on a 48 month term) by the weekly repayment amount of \$226.14 which equals \$47,036.45. This calculator does not consider any of your own personal circumstances and we strongly suggest you seek budgeting advice prior to committing to any loan contract. Responsible lending criteria and lender terms and conditions will likely apply to any finalised loan contract. Proof of security and/or vehicle insurance may also be required before proceeding.

Vehicle data updated 30 January 2026 12:17