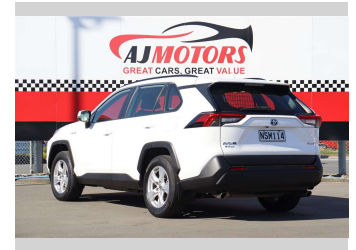
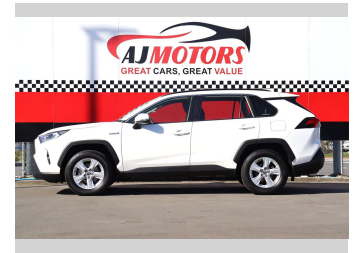


2021 Toyota RAV4 GX 2.5PH/4WD/HD



Purchase Price

Includes GST, Registration & Licensing

POA

Finance may be available on this vehicle. Ask one of our friendly staff for more information.

finance
NOW

Gain peace of mind with Mechanical Breakdown Insurance. **Ask us how.**

autosure
INSURANCE

Top features

- » ABS
- » Adaptive Cruise Control
- » Auto air-condition
- » Auto headlight
- » Auto Hold
- » blind spot monitor
- » Central Locking
- » Eco Mode
- » EV mode
- » Fog Lights
- » Lane Departure Warning
- » Push button start
- » Rear Wiper
- » Reversing Camera
- » Sport mode
- » Traction control

Body Style

4 door, Station Wagon

Odometer

96,200 km

Engine

2487 cc, Hybrid

Fuel Type

Electricity

Transmission

Automatic, 4WD

Wheels

17"

VIN

JTMBW3FVX0D119761

Interior

Black

Safety



Based on 2019 ANCAP rating for 19+ models

Reg No.

NSM114

Ext Colour

White

History

Ex-Overseas

Seats

5 seats

CO2 Emissions

★★★★★☆☆

121 grams/km

Energy Economy

★★★★☆☆☆☆

**Annual fuel cost of \$2,080
5.3L per 100km**

Cost per year is an estimate based on petrol price of \$2.80 per litre and an average distance of 14000 km. Emissions and Energy Economy figures standardised to 3P WLTP.

Stock ID: 29803



AJ Motors Christchurch | Phone 0800 566 789 | Email
christchurch@ajmotors.co.nz
207 Main South Road, Hornby, Christchurch 8042, New Zealand
www.ajmotors.co.nz