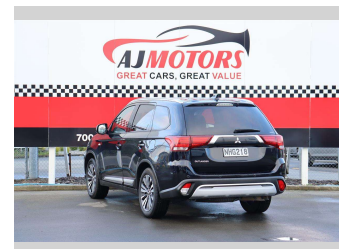
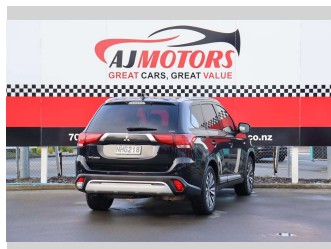


# 2021 Mitsubishi Outlander LS 4WD / 7 SEATER / NZ



## Purchase Price

**\$19,987**

Includes GST  
Excludes on-road costs of \$295

Finance may be available on this vehicle. Ask one of our friendly staff for more information.

finance  
**NOW**

Gain peace of mind with Mechanical Breakdown Insurance. **Ask us how.**

**autosure**  
INSURANCE

## Top features

- » ABS
- » Auto air-condition
- » Auto headlight
- » Auto Hold
- » Central Locking
- » Cruise control
- » Forward Collision Mitigation
- » Parking Sensors
- » Push button start
- » Smart key system with...
- » Traction control

## Body Style

**4 door, RV/SUV**

## Odometer

**115,800 km**

## Engine

**2360 cc, Internal Combustion**

## Fuel Type

**Petrol**

## Transmission

**Automatic, 4WD**

## Wheels

**18"**

## VIN

**JMFXTGF8WLZ016693**

## Interior

**Black**

## Safety



Based on 2024 UCSR rating for 12-21 models

## Reg No.

**NHG218**

## Ext Colour

**Black**

## History

**NZ New**

## Seats

**7 seats**

## CO2 Emissions

★★★★☆

**186 grams/km**

## Energy Economy

★★☆☆☆☆

**Annual fuel cost of \$3,140  
8L per 100km**

Cost per year is an estimate based on petrol price of \$2.80 per litre and an average distance of 14000 km. Emissions and Energy Economy figures standardised to 3P WLTP.

**Stock ID: 28498**



AJ Motors Christchurch City | Phone 0800 566 789 | Email  
sockburn@ajmotors.co.nz  
393 Ferry Road, Woolston, Christchurch 8023, New Zealand  
www.ajmotors.co.nz