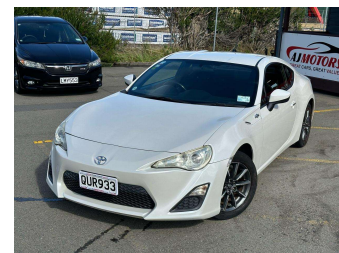



# 2012 Toyota 86 G



**Purchase Price** **\$22,980**  
Includes GST  
 Excludes on-road costs of \$695

Finance may be available on this vehicle. Ask one of our friendly staff for more information.



Gain peace of mind with Mechanical Breakdown Insurance. **Ask us how.**



**Top features**  
 None Listed

**Body Style**  
**2 door, Coupe**

**Odometer**  
**98,250 km**

**Engine**  
**1998 cc, Internal Combustion**

**Fuel Type**  
**#95 Petrol**

**Transmission**  
**Automatic, 2WD**

**Wheels**  
**16", Alloy**

**VIN**  
**7AT0H65RX24012607**

**Interior**  
**Black**

**Safety**  
  
 Based on 2025 VSRR rating

**Reg No.**  
**QUR933**

**Ext Colour**  
**PEARLWHITE**

**History**  
**Ex-Overseas**

**Seats**  
**2 seats, Fabric**

**CO2 Emissions**  
 ★★★★★☆☆  
**200 grams/km**

**Energy Economy**  
 ★★☆☆☆☆  
**Annual fuel cost of \$3,370**  
**8.6L per 100km**

Cost per year is an estimate based on petrol price of \$2.80 per litre and an average distance of 14000 km. Emissions and Energy Economy figures standardised to 3P WLTP.

**Stock ID: 33400**



AJ Motors Wellington | Phone 0800 566 789 | Email kim@ajmotors.co.nz  
 35 Annie Huggan Grove, Petone, Lower Hutt 5012, New Zealand  
 www.ajmotors.co.nz