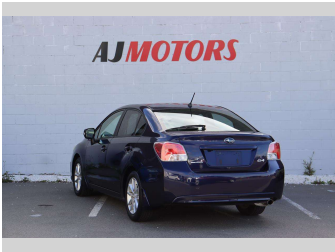
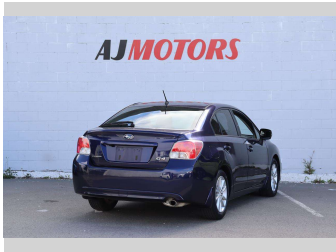


2012 Subaru Impreza G4 2.0I EYESIGHT



Purchase Price

\$10,980

Includes GST

Excludes on-road costs of \$295

Finance may be available on this vehicle. Ask one of our friendly staff for more information.

finance

NOW

Gain peace of mind with Mechanical Breakdown Insurance. Ask us how.

autosure

INSURANCE

Top features

» ABS

» Adaptive Cruise Contro...

» Auto air-condition

» Auto headlight

» Auto Start Stop

» Central Locking

» Fog Lights

» Forward Collision Miti...

» Lane Departure Warning

» Push button start

» Smart key system with...

» Traction control

Body Style

4 door, Sedan

Odometer

90,000 km

Engine

2000 cc, Internal Combustion

Fuel Type

Petrol

Transmission

Automatic, AWD

Wheels

16"

VIN

7AT0GF09X24003087

Interior

Black

Safety

5 star

safety rating

Based on 2024 UCSR rating for 12-16 models

Reg No.

RBN685

Ext Colour

Blue

History

Ex-Overseas

Seats

5 seats

CO2 Emissions

★★★★☆

163 grams/km

Energy Economy

★★☆☆☆

Annual fuel cost of \$2,740

7L per 100km

Cost per year is an estimate based on petrol price of \$2.80 per litre and an average distance of 14000 km. Emissions and Energy Economy figures standardised to 3P WLTP.

Stock ID: 28512