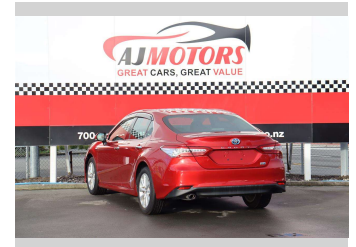
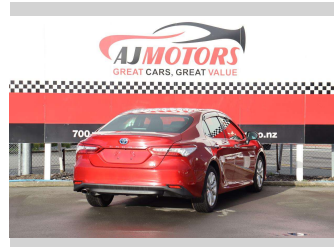


2018 Toyota Camry 2.5G HYBRID CRUISE CONTROL



Purchase Price

\$26,988

Includes GST
Excludes on-road costs of \$695

Finance may be available on this vehicle. Ask one of our friendly staff for more information.

**finance
NOW**

Gain peace of mind with Mechanical Breakdown Insurance. **Ask us how.**

autosure
INSURANCE

Top features

- » ABS
- » Auto headlight
- » Auto Hold
- » Central Locking
- » Cruise control
- » Eco Mode
- » electric seats
- » Fog Lights
- » Push button start
- » Reversing Camera
- » Smart key system with...
- » Sport mode
- » Traction control

Body Style

4 door, Sedan

Odometer

49,500 km

Engine

2500 cc, Hybrid

Fuel Type

Hybrid

Transmission

Automatic, 2WD

Wheels

17"

VIN

7AT0H604X25032290

Interior

Black

Safety



Based on 2024 UCSR rating
for 11-17 models

Reg No.

-

Ext Colour

Red

History

Ex-Overseas

Seats

5 seats

CO2 Emissions

★★★★☆

104 grams/km

Energy Economy

★★★★☆☆

**Annual fuel cost of \$1,720
4.4L per 100km**

Cost per year is an estimate based on petrol price of \$2.80 per litre and an average distance of 14000 km. Emissions and Energy Economy figures standardised to 3P WLTP.

Stock ID: 26803



AJ Motors Christchurch City | Phone 0800 566 789 | Email
sockburn@ajmotors.co.nz
393 Ferry Road, Woolston, Christchurch 8023, New Zealand
www.ajmotors.co.nz