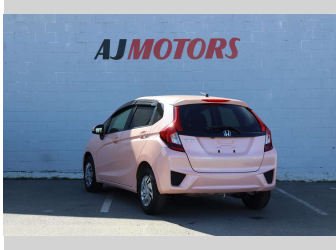
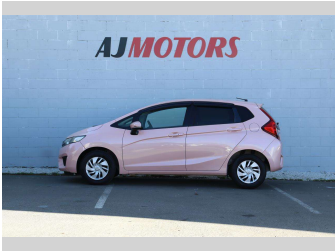
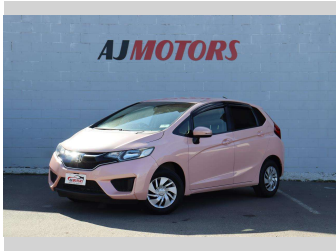


2016 Honda Fit 1.3L



Purchase Price

\$12,980

Includes GST
Excludes on-road costs of \$295

Indicative repayments

\$87.41 per week*

Based on a 48 month term & no deposit.
Total repayments (208) = **\$18,182.17**

finance
NOW

Gain peace of mind with
Mechanical Breakdown
Insurance. **Ask us how.**



Top features

- » ABS
- » Auto air-condition
- » Auto Fold Mirrors
- » Auto Start Stop
- » Bluetooth
- » Child seat anchor poin...
- » Eco Mode
- » Electric Mirrors (Retr...
- » Heated Seats
- » Keyless entry
- » Multi-function steerin...
- » Push button start
- » Rear Wiper
- » Reversing Camera
- » Smart key system with...
- » Spoiler
- » Wheel Covers

Body Style

4 door, Hatchback

Odometer

34,500 km

Engine

1317 cc, Internal Combustion

Fuel Type

#91 Petrol

Transmission

Automatic, Front Wheel

Wheels

17"

VIN

7AT08G2YX24212936

Interior

Black

Safety



Based on 2024 UCSR rating
for 14-20 models

Reg No.

RBP854

Ext Colour

Pink

History

Ex-Overseas

Seats

5 seats

CO2 Emissions

★★★★☆

116 grams/km

Energy Economy

★★★★☆☆

**Annual fuel cost of \$1,960
5L per 100km**

Cost per year is an estimate based
on petrol price of \$2.80 per litre and
an average distance of 14000 km.
Emissions and Energy Economy
figures standardised to 3P WLTP.

Stock ID: 27410



AJ Motors Christchurch | Phone 0800 566 789 | Email
christchurch@ajmotors.co.nz
207 Main South Road, Hornby, Christchurch 8042, New Zealand
www.ajmotors.co.nz

* AJ Motors Christchurch is not a lender nor a financial adviser. Any amounts displayed should not be seen as an offer of finance or taken as financial advice. The interest rate, fees and loan term used in this calculation may not actually represent those available from lenders. Actual interest rates, fees and loan terms will vary per lender and are typically based on an assessment of your credit risk and responsible lending criteria. Any repayment amounts displayed are indicative only and have been calculated using several other indicative inputs. The interest rate used in this calculation is an arbitrary 13.95%, however exact interest rates vary per lender. The term of the loan used in this calculation is 48 month. Exact terms available vary per lender although options typically include 6, 12, 18, 24, 36, 48 and 60 months. This calculation also includes two typical mandatory fees charged by lenders. These are an account admin fee of \$2.50 per month (other payment frequencies may be available) and a one-off establishment fee of \$508.00. Typically, this fee can be paid upfront or, as in this calculation, be capitalised over the contract term, ie. included in the loan amount. These fees can vary per lender and other non-mandatory fees and charges may also apply. The total amount of repayments has been calculated by multiplying 208 weekly repayments (based on a 48 month term) by the weekly repayment amount of \$87.41 which equals \$18,182.17. This calculator does not consider any of your own personal circumstances and we strongly suggest you seek budgeting advice prior to committing to any loan contract. Responsible lending criteria and lender terms and conditions will likely apply to any finalised loan contract. Proof of security and/or vehicle insurance may also be required before proceeding.