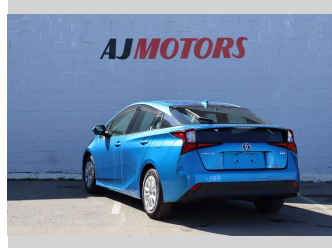


2019 Toyota Prius S



Purchase Price

\$22,988

Includes GST
Excludes on-road costs of \$695

Finance may be available on this vehicle. Ask one of our friendly staff for more information.

finance
NOW

Gain peace of mind with Mechanical Breakdown Insurance. **Ask us how.**

 **autosure**
INSURANCE

Top features

- » Alloy Wheels
- » Auto air-condition
- » Auto headlight
- » Auto High Beam
- » Child seat anchor poin...
- » Cruise control
- » Digital Display
- » Drive Mode
- » Electric Mirrors (Retr...
- » EV mode
- » Fog Lights
- » Keyless entry
- » Lane Departure Warning
- » Multi-function steerin...
- » Parking Sensors
- » Parking Sensors
- » Push button start
- » Reversing Camera

Body Style

4 door, Hatchback

Odometer

65,700 km

Engine

1800 cc, Hybrid

Fuel Type

Hybrid

Transmission

Automatic, Front Wheel

Wheels

1956515"

VIN

7AT0H637X24100884

Interior

Black

Safety



Based on 2024 VSRR rating

Reg No.

QUZ263

Ext Colour

Blue

History

Ex-Overseas

Seats

5 seats

CO2 Emissions

★★★★☆

85 grams/km

Energy Economy

★★★★☆

Annual fuel cost of \$1,410

3.6L per 100km

Cost per year is an estimate based on petrol price of \$2.80 per litre and an average distance of 14000 km. Emissions and Energy Economy figures standardised to 3P WLTP.

Stock ID: 19690



AJ Motors Christchurch City | Phone 0800 566 789 | Email
sockburn@ajmotors.co.nz
393 Ferry Road, Woolston, Christchurch 8023, New Zealand
www.ajmotors.co.nz