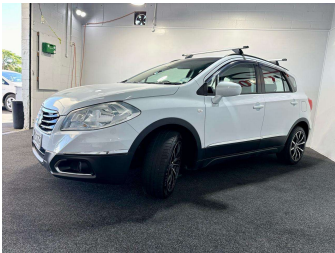


2017 Suzuki SX4 GLXFCB (NZ New)



Purchase Price

\$14,985

Includes GST

Excludes on-road costs of \$695

Indicative repayments

\$87.48 per week*

Based on a 60 month term & no deposit.

Total repayments (260) = \$22,745.74

finance

NOW

Gain peace of mind with Mechanical Breakdown Insurance. Ask us how.



Top features

» Air Conditioning

» Alloy Wheels

» Central Locking

» Child seat anchor poin...

» Climate Control

» Cruise control

» Electric Mirrors

» Multi-function steerin...

» Reversing Camera

» Roof Rack

» Tow Bar

Body Style

5 door, RV/SUV

Odometer

101,199 km

Engine

1586 cc, Internal Combustion

Fuel Type

Petrol

Transmission

Automatic

Wheels

-


VIN

TSMJYA22S00418411

Interior

Black and grey

Safety



Based on 2024 VSRR rating

Reg No.

KLS572

Ext Colour

White

History

Ex-Overseas

Seats

5 seats, Fabric

CO2 Emissions

★★★★☆

152 grams/km

Energy Economy

★★★★☆☆

Annual fuel cost of \$2,510

6.4L per 100km

Cost per year is an estimate based on petrol price of \$2.80 per litre and an average distance of 14000 km. Emissions and Energy Economy figures standardised to 3P WLTP.

Stock ID: 26439



AJ Motors East Tamaki | Phone 0800 566 789 | Email easttamaki@ajmotors.co.nz

53 Springs Road, East Tamaki, Auckland 2013, New Zealand

www.ajmotors.co.nz

* AJ Motors East Tamaki is not a lender nor a financial adviser. Any amounts displayed should not be seen as an offer of finance or taken as financial advice. The interest rate, fees and loan term used in this calculation may not actually represent those available from lenders. Actual interest rates, fees and loan terms will vary per lender and are typically based on an assessment of your credit risk and responsible lending criteria. Any repayment amounts displayed are indicative only and have been calculated using several other indicative inputs. The interest rate used in this calculation is an arbitrary 13.95%, however exact interest rates vary per lender. The term of the loan used in this calculation is 60 month. Exact terms available vary per lender although options typically include 6, 12, 18, 24, 36, 48 and 60 months. This calculation also includes two typical mandatory fees charged by lenders. These are an account admin fee of \$2.50 per month (other payment frequencies may be available) and a one-off establishment fee of \$523.00. Typically, this fee can be paid upfront or, as in this calculation, be capitalised over the contract term, ie. included in the loan amount. These fees can vary per lender and other non-mandatory fees and charges may also apply. The total amount of repayments has been calculated by multiplying 260 weekly repayments (based on a 60 month term) by the weekly repayment amount of \$87.48 which equals \$22,745.74. This calculator does not consider any of your own personal circumstances and we strongly suggest you seek budgeting advice prior to committing to any loan contract. Responsible lending criteria and lender terms and conditions will likely apply to any finalised loan contract. Proof of security and/or vehicle insurance may also be required before proceeding.

Generated 01 July 2025 18:13