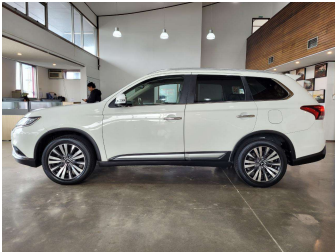


2021 Mitsubishi Outlander VRX 2.4P/4WD(NZ New)



Purchase Price

\$28,980

Includes GST

Excludes on-road costs of \$695

Finance may be available on this vehicle. Ask one of our friendly staff for more information.

finance

NOW

Gain peace of mind with Mechanical Breakdown Insurance. Ask us how.

autosure

INSURANCE

Top features

» 360 Degree Reversing C...

» 4WD

» ABS

» Air Conditioning

» Alloy Wheels

» Apple CarPlay

» Bluetooth

» Central Locking

» Child seat anchor poin...

» Cruise control

» Dual air-condition

» Eco Mode

» Electric Mirrors (Retr...

» Electronic Hand Brake

» Headlights - LED with...

» Lane Departure Warning

» LED daytime running li...

» Multi-function steerin...

Body Style

5 door, RV/SUV

Odometer

78,098 km

Engine

2360 cc, Internal Combustion

Fuel Type

Petrol

Transmission

Automatic, 4WD

Wheels

18", Factory Alloys

VIN

JMFXTGF8WLZ018224

Interior

Black, Plastic

Safety

5 star

safety rating

Based on 2024 UCSR rating for 12-21 models

Reg No.

NPL217

Ext Colour

White

History

NZ New

Seats

7 seats, Leather

CO2 Emissions

★★★★☆

186 grams/km

Energy Economy

★★☆☆☆☆

Annual fuel cost of \$3,140

8L per 100km

Cost per year is an estimate based on petrol price of \$2.80 per litre and an average distance of 14000 km. Emissions and Energy Economy figures standardised to 3P WLTP.

Stock ID: 28149



AJ Motors Wellington | Phone 0800 566 789 | Email kim@ajmotors.co.nz
35 Annie Huggan Grove, Petone, Lower Hutt 5012, New Zealand
www.ajmotors.co.nz