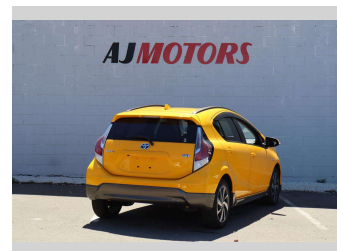
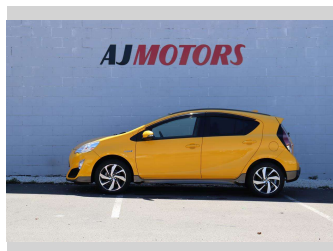
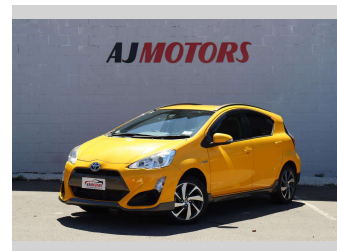
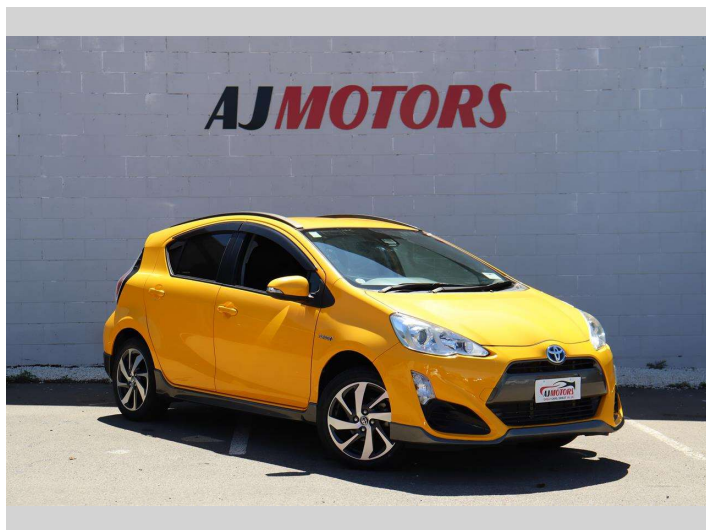



2016 Toyota Aqua X-urban / PUSH START / HALF-



Purchase Price **\$13,987**

Includes GST
Excludes on-road costs of \$695

Finance may be available on this vehicle. Ask one of our friendly staff for more information.



Gain peace of mind with Mechanical Breakdown Insurance. **Ask us how.**



Top features

- » ABS
- » Auto air-condition
- » Auto headlight
- » Auto High Beam
- » Central Locking
- » Eco Mode
- » EV mode
- » Forward Collision Miti...
- » Lane Departure Warning
- » Push button start
- » Rear Wiper
- » Reversing Camera
- » Smart key system with...
- » Traction control

Body Style
4 door, Hatchback

Odometer
73,300 km

Engine
1500 cc, Hybrid

Fuel Type
Hybrid


Transmission
Automatic, Front Wheel

Wheels
16", Factory Alloys

VIN
7AT0H65YX24518211

Interior
Black

Safety



Based on 2024 UCSR rating for 12-20 models

Reg No.
-

Ext Colour
Yellow

History
Ex-Overseas

Seats
5 seats

CO2 Emissions
★★★★☆
92 grams/km

Energy Economy
★★★★☆
Annual fuel cost of \$1,530
3.9L per 100km

Cost per year is an estimate based on petrol price of \$2.80 per litre and an average distance of 14000 km. Emissions and Energy Economy figures standardised to 3P WLTP.

Stock ID: 24100



AJ Motors Christchurch City | Phone 0800 566 789 | Email sockburn@ajmotors.co.nz
393 Ferry Road, Woolston, Christchurch 8023, New Zealand
www.ajmotors.co.nz